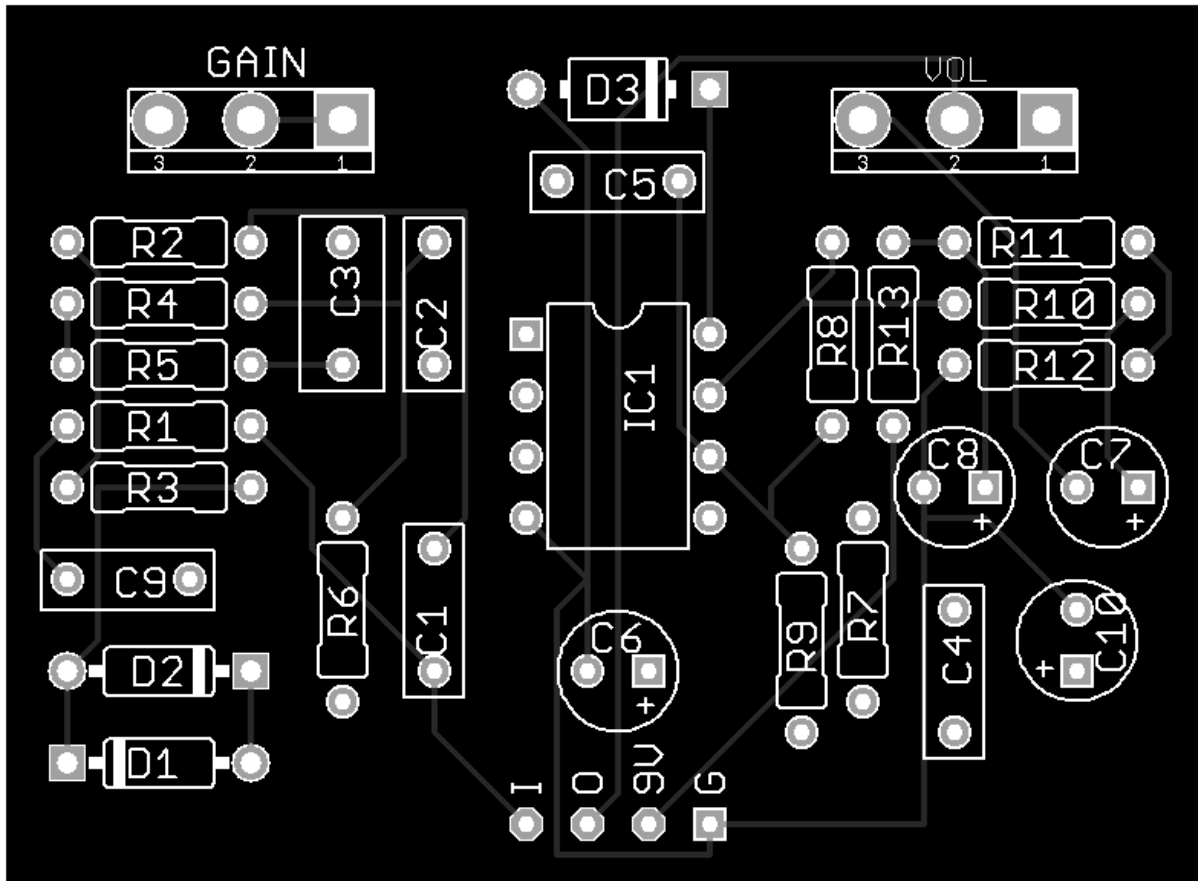


Curse Dolly Overdrive



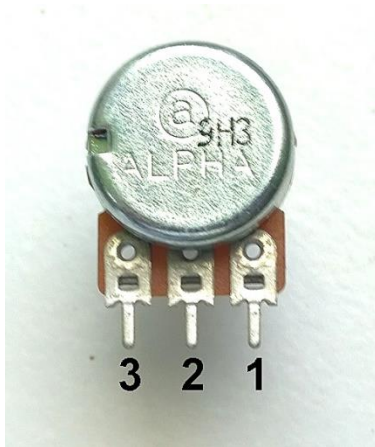
BOM

Part	Value	Part	Value
C1	10n	R1	2.2M
C2	220p	R2	10K
C3	100n	R3	470K
C4	1n	R4	470K
C5	220p	R5	47K
C6	2.2u	R6	10K
C7	2.2u	R7	10K
C8	100u	R8	150K
C9	100n	R9	47K
C10	100u	R10	150
D1	1N4148	R11	47K
D2	1N4148	R12	47K
D3	1N4001	R13	47
IC1	TL072P	GAIN	500K-RA
		LEVEL	100K-A

Builders Notes

The two potentiometers (Gain & VOL) in this circuit need to be connected to the PCB via wires.

Each socket on the PCB has a number below it and the wire must connect to the associated pin number on the potentiometer. The potentiometer pins are numbered as shown below (back of pot).



The IC and Diodes are susceptible to heat damage. To avoid damage to these components consider using a heatsink to dissipate the heat or better still consider using sockets to mount these items.

Three of the capacitors (C6, C7, C8 & C10) in the circuit are polarised. You will need to ensure that they orientated correctly (the positive pins of these components have a square solder pad).

Offboard Wiring

To test your circuit -

Connect the tip connector of your input jack socket to the IN terminal on the circuit board.

Connect the tip connector of your output jack socket to the OUT terminal on the circuit board.

Connect the sleeve connectors of both jack sockets and the negative connector of your battery connector or dc jack to the GND terminal on the circuit board.

Connect the 9V supply of your battery connector or dc jack to the +9V terminal on the circuit board.